

# GloCal Health Fellowship Career Development Webinar

## **Beatriz Martínez-López, DMV, MPVM, PhD**

Professor of Infectious Disease Epidemiology

Director of the Center for Animal Disease Modeling and Surveillance (CADMS),

FAO Reference Center for Veterinary Epidemiology

[beamartinezlopez@ucdavis.edu](mailto:beamartinezlopez@ucdavis.edu)

SCHOOL OF VETERINARY MEDICINE, UC DAVIS

<https://cadms.vetmed.ucdavis.edu>



**UCDAVIS**

**VETERINARY MEDICINE**

*Center for Animal Disease Modeling and Surveillance*



Feb 17, 2021

# Background

## Education

- 1999-2004 DVM, Complutense University of Madrid (**UCM**), Spain.



# Background

Post-Doctoral Researcher

Research

**2009-2011** **Post-doc: EU project (CSFV\_goDIVA):** Evaluation of the epidemiological role of backyard pigs in the European Union. **VISAVET-UCM**, Madrid, Spain

**2012-2013** **National competitive research contract:** New epi-methods for evaluation, prevention and control of zoonotic diseases at the wildlife-domestic interface. **National Wildlife Research Institute (IREC-CSIC-UCLM)**, Ciudad Real, Spain

**More than 20 National and international competitive scientific projects/contracts** with public/private bodies

**47 publications:** (17 first author)  
24 SCI,  
12 no SCI,  
11 books/monographs

**Funds capture**  
2,080,886 €  
(USD 2.7 million)

Teaching

**Associate Professor of Veterinary Epidemiology**, University Cardenal Herrera-CEU (**UCH-CEU**), Valencia, Spain

**Lecturer** at Master degrees in Spain:

- Advance data analysis in biostatistics and epidemiology (**UCLM**)
- Wildlife epidemiology and disease control (**UCLM**)
- Management of Crisis and Emerging Threatens in a Global World (**USP-CEU**)

**Courses/seminars** on epidemiology of infectious diseases for Veterinary Services/Private veterinarians

**Teaching material:**

Epidemiology of infectious diseases  
Digital/field simulations  
Video/photo libraries

Mentor, advisor or committee member of 8 **graduate students**.

# Background

Assistant/Associate/Full Professor (2014-cont.)

## Tupper Hall

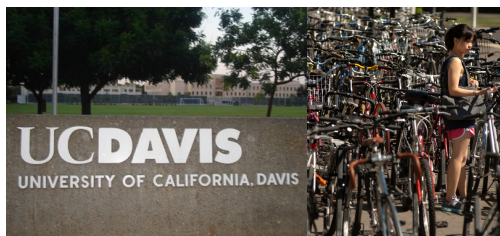
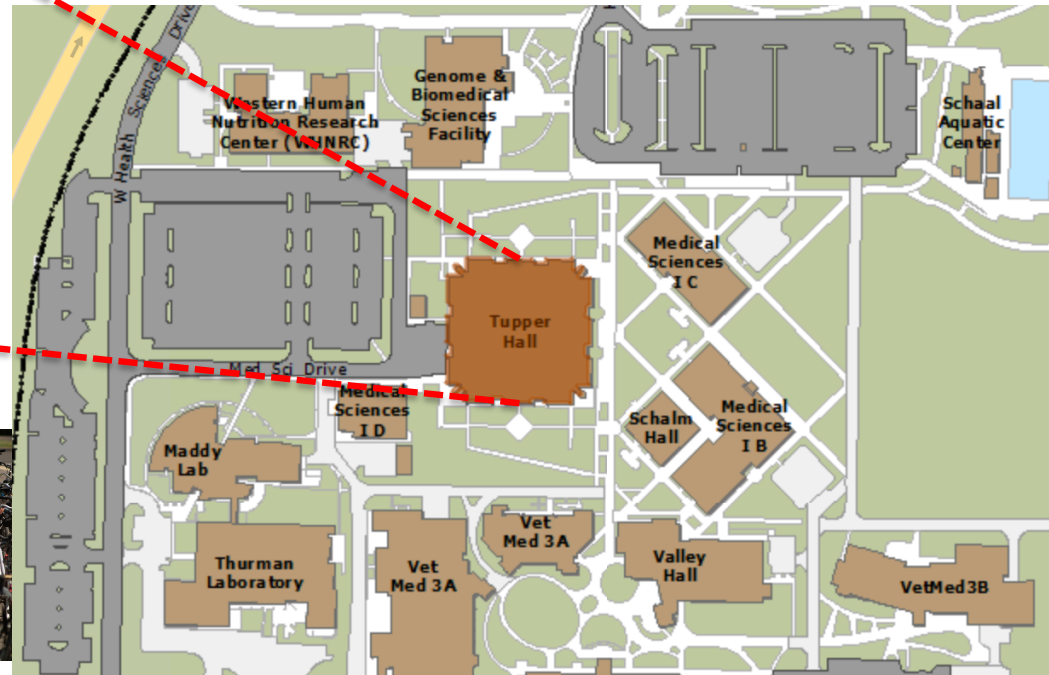
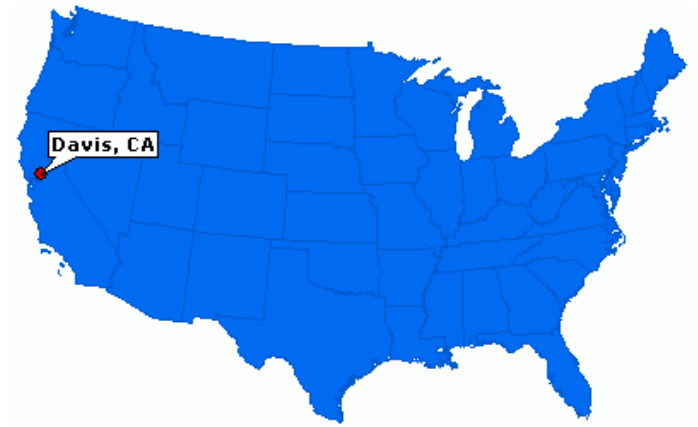
One Shields Avenue

Department of Medicine and Epidemiology

School of Veterinary Medicine

University of California, Davis, CA 95616

>100 publications  
>\$10 million funds capture



## During this time...

I had the opportunity to work in **INTERDISCIPLINARY TEAMS**

TRANSBOUNDARY AND ZOOONOTIC  
EMERGING AND RE-EMERGING

RISK ASSESSMENT  
MODELLING

**Global strategy for approaching  
the prevention and control of  
infectious diseases**

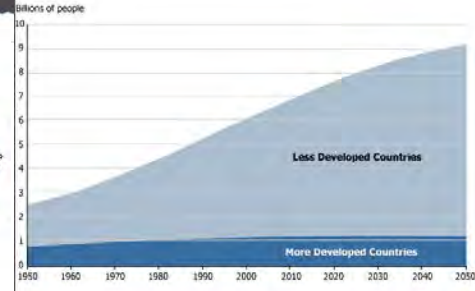
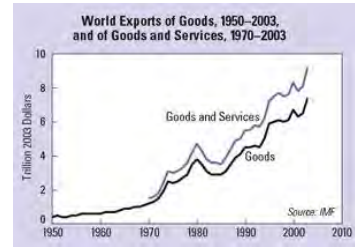
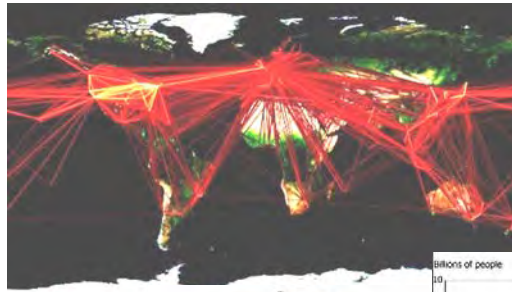
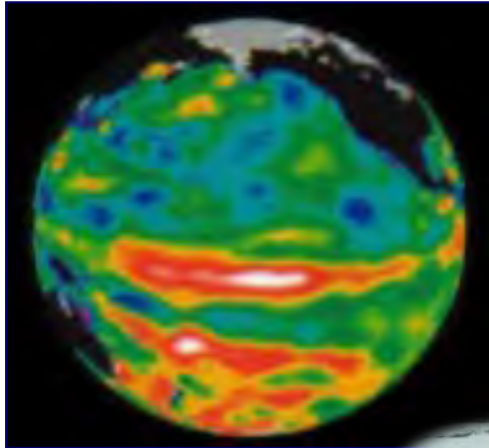
ANIMAL HEALTH  
POLICY MAKERS  
INSURANCE COMPANIES  
STUDENTS

PEOPLE

**WHY A GLOBAL  
STRATEGY?**

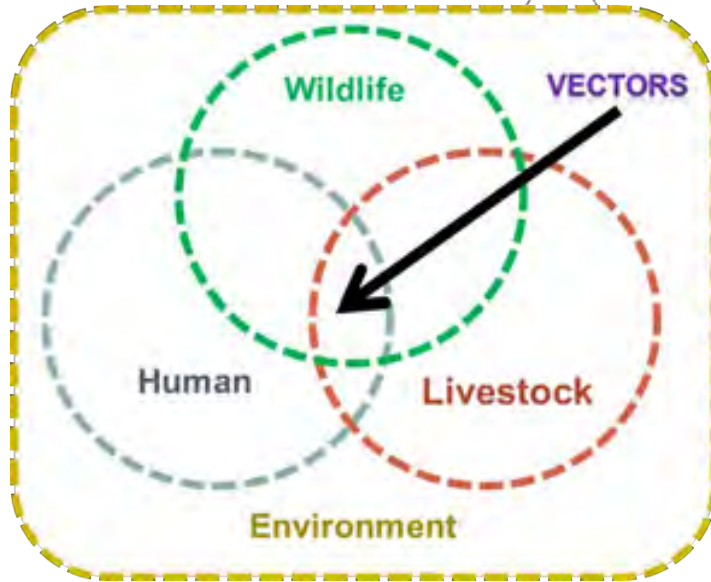


# Global changes...



# Global changes...

Increased interaction

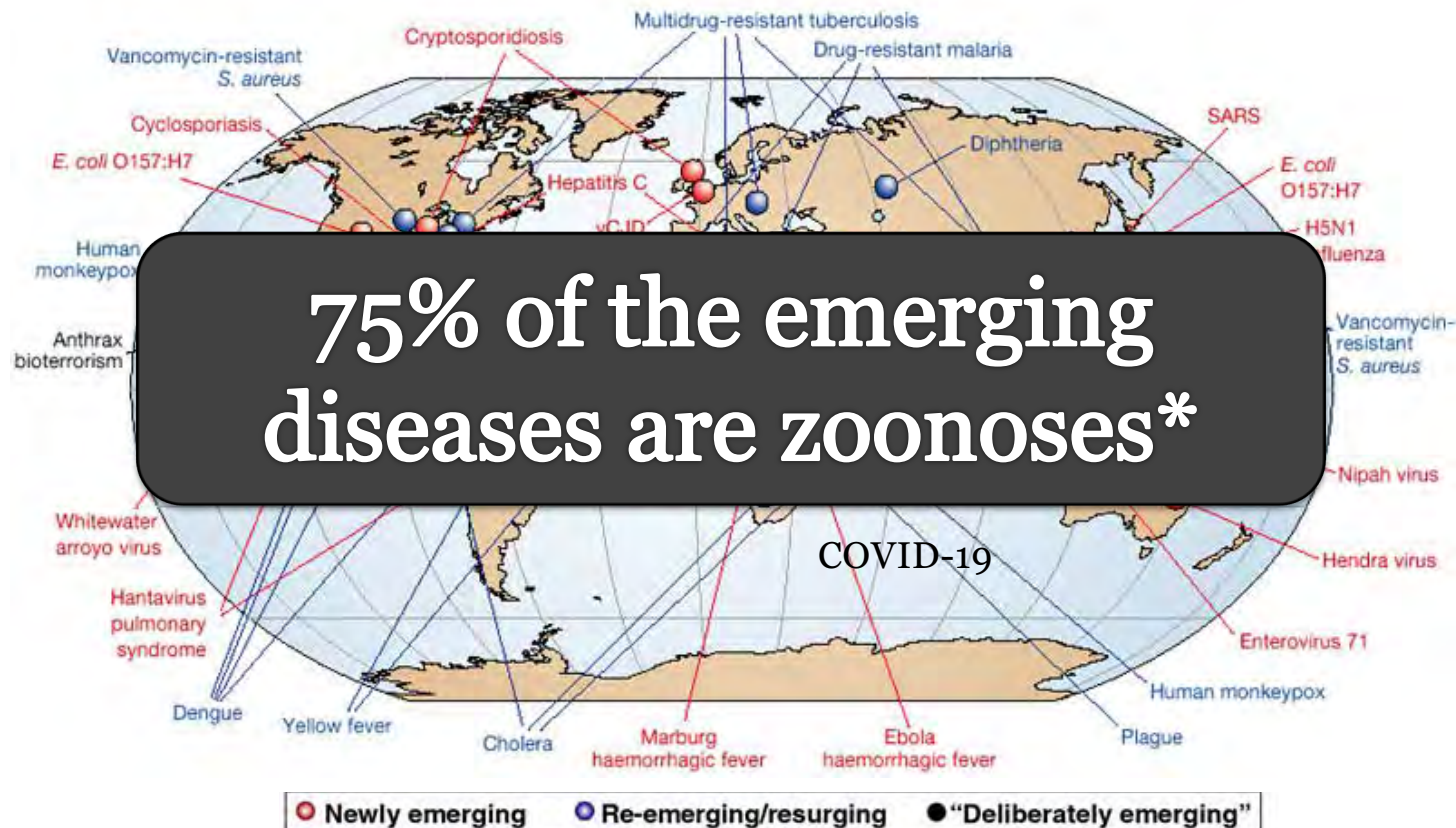


Complex epidemiological scenarios → **All is interrelated...**

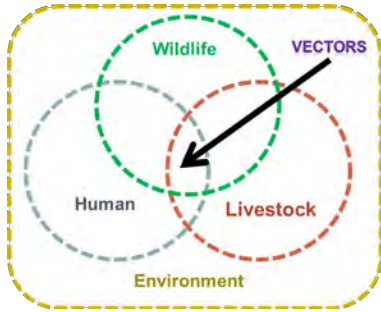


# Global changes...

Increased interaction



Source: [http://www.nature.com/nature/journal/v430/n6996/fig\\_tab/nature02759\\_F1.html](http://www.nature.com/nature/journal/v430/n6996/fig_tab/nature02759_F1.html)



# THE PROBLEM...

Time to detection in the field



**Early detection !!!**



# Global strategy

## THE PROBLEM...

Time to detection in the field



**Early detection !!!**

# Global strategy

